

► Specialist, high performance resin flooring systems for...

WINERIES

Welcome to Flowcrete Africa

Chances are the next time you visit your local wine estate or vineyard, you'll encounter specialist resin flooring systems throughout the facility rather than the typical tile or concrete finishes traditionally found in these environments.

You'll find these systems not only behind the scenes where the wine is fermenting or aging, but also in the tasting rooms where it is being consumed. Resin flooring systems are being used more often in these environments owing to their excellent performance attributes combined with design versatility.

Flowcrete offers a complete package of specialist resin and HACCP International certified, antimicrobial treated floor coating systems designed to cater for all areas within the winery.

Winery Floor Plan



Flowfresh RT with WR



Flowfresh MF



Mondéco Earth, Peran STB
or Metallic Expressions



Flowfresh Ultra Flakes



Flowcoat SF41



For the application suitability of each system, look out for the check mark symbol throughout the brochure.



ISO 22196



Polygiene® Antimicrobial Effectiveness

SARS-CoV	✓
Salmonella Typhi	✓
MRSA	✓
Enterococcus Faecalis	✓
E-coli	✓
Staphylococcus Aureus	✓
Listeria	✓
Streptococcus Pyogenes	✓
C.difficile	✓
Pseudomonas Aeruginosa	✓
Proteus Vulgaris	✓
Campila Bacta	✓



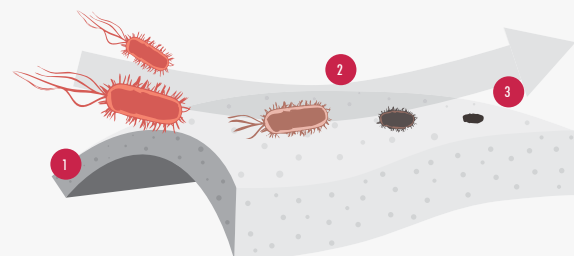
HACCP International Certified Hygienic Flooring

A winery's floor is subject to constant traffic, impact damage due to barrel or equipment handling and is usually found in humid, acid-rich conditions.

Resin flooring systems ensure a non-porous, smooth and seamless surface where there is nowhere for bacteria or mould spores to grow.

Flowcrete's HACCP International and ISO 22196 certified polyurethane flooring materials offer enhanced protection with the inclusion of Polygiene®, a silver-ion antimicrobial agent, designed to protect the surface from degradation caused by microbial growth.

How Does Polygiene® Work?



- 1 The silver ions are distributed throughout the floor.
- 2 The silver ions migrate to the surface.
- 3 They inhibit bacteria growth by penetrating the cell membrane.

Flowfresh RT (6–9 mm)

HACCP International certified, heavy duty, chemical resistant, antimicrobial polyurethane resin floor screed providing a durable textured coloured floor finish. The system incorporates Polygiene® which inhibits the growth of bacteria, fungi, moulds and mildew.

✓ BACK OF HOUSE KITCHENS, FERMENTATION ROOMS

Standard Colors



Sand Yellow



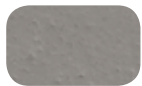
Cream



Tomato Red



Yellow Ochre



Signal Grey



Signal Green



Dusty Grey



Light Blue



FIRE RESISTANCE

BS 476-7
Surface Spread of Flame

Class 2 (indicative)

SLIP RESISTANCE

TRRL Pendulum Slip Test

Dry >80, Wet >35

TEMPERATURE RESISTANCE

From -25°C to 100°C (at 6mm), -45°C to 120°C (at 9mm)



Flowcrete RT is suitable for use with **Flowcrete WR**; a heavy duty, antimicrobial coving and wall rendering mortar with an attractive finely textured finish. For a full technical profile, colour chart and samples, contact your local Flowcrete Office.

ISO 22196



Flowfresh Ultra Flakes (4 mm)

HACCP International certified, decorative, flaked floor finish incorporating advance polyurea technology. The system incorporates Polygiene® which inhibits the growth of bacteria, fungi, moulds and mildew.

✓ ABLUTIONS

Standard Colors



Domino



Cobblestone



Quicksilver



Scarlett



Desert Tan



Ice Blue



Green Bay



Midnight

FIRE RESISTANCE

BS 476-7
Surface Spread of Flame

Class 2 (indicative)

SLIP RESISTANCE

TRRL Pendulum Slip Test

Dry >56, Wet >45

TEMPERATURE RESISTANCE

Up to 90°C

ABRASION RESISTANCE

Taber Abrader (1kg load
using CS17 wheels)

0.1g loss per 100 cycles

Applied colours may differ from the examples shown. For a full technical profile, colour chart and samples, contact your local Flowcrete office.

Flowfresh MF (3–4 mm)

HACCP International certified, chemical resistant, antimicrobial polyurethane resin floor system with smooth matt coloured finish. The system incorporates Polygiene® which inhibits the growth of bacteria, fungi, moulds and mildew.

✓ SERVICE ROOMS

Standard Colors



Sand Yellow



Cream



Tomato Red



Yellow Ochre



Signal Grey



Signal Green



Dusty Grey



Light Blue



FIRE RESISTANCE

BS 476-7 Surface Spread of Flame	Class 2 (indicative)
-------------------------------------	----------------------

SLIP RESISTANCE

TRRL Pendulum Slip Test	Dry >70, Wet >25
-------------------------	------------------

TEMPERATURE RESISTANCE

From -5°C to 70°C (at 3mm), -15°C to 90°C (at 4mm)
--

ABRASION RESISTANCE

Taber Abrader (1kg load using CS17 wheels)	0.1g loss per 100 cycles
---	--------------------------



Flowcoat SF41 (0.3–0.5 mm)

High performance, solvent free, chemical resistant epoxy resin coating. Different grades of slip resistance can be achieved by the inclusion of graded aggregate between coats.

✓ STORAGE AREAS

Standard Colors



Cream



Kalahari



Light Grey



Mid Grey



Slate Grey



Sky Blue



Green



Signal Red

FIRE RESISTANCE

BS 476-7 Surface Spread of Flame	Class 1
-------------------------------------	---------

SLIP RESISTANCE

TRRL Pendulum Slip Test	Dry 80, Wet 35
-------------------------	----------------

SURFACE HARDNESS

Koenig Hardness Test	180 seconds
----------------------	-------------

ABRASION RESISTANCE

Taber Abrader (1kg load using CS17 wheels)	5gm loss per 100 cycles
---	-------------------------



Mondéco Earth (8 mm)

Seamless, solvent free, epoxy resin terrazzo floor finish incorporating granite and flint aggregates, that can be applied in bespoke patterns. Owing to its durability, the system will withstand daily abuse to deliver a long-lasting floor finish.

✓ FOYER / ENTRANCES, RESTAURANTS, TASTING ROOMS

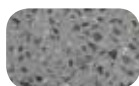
Standard Colors



Snow



Pebble



Greystone



Moonstone



Sea Green



Spring Green



Coral



Ruby



FIRE RESISTANCE

BS 476-7
Surface Spread of Flame

Class 2

SLIP RESISTANCE

TRRL Pendulum Slip Test

Dry >40

TEMPERATURE RESISTANCE

Tolerant of sustained temperatures of 60°C

ABRASION RESISTANCE

Taber Abrader (1kg load
using CS17 wheels)

50mg loss per 100 cycles

Applied colours may differ from the examples shown. For a full technical profile, colour chart and samples, contact your local Flowcrete office.

Metallic Expressions

(thickness dependant on specification)

Decorative, hard wearing advanced polyurea technology with unique application method providing a chic, versatile, metallic floor finish.

✓ FOYER / ENTRANCES, RESTAURANTS, TASTING ROOMS

Standard Colors



FIRE RESISTANCE

BS 476-7
Surface Spread of Flame

Class 1

SLIP RESISTANCE

TRRL Pendulum Slip Test

Dry >40, Wet dependant
on specification

TEMPERATURE RESISTANCE

Tolerant up to 70°C

ABRASION RESISTANCE

Taber Abrader (1kg load
using CS17 wheels)

5mg loss per 100 cycles



Peran STB (3–4 mm)

Hard-wearing, decorative resin floor topping made up of colour quartz granules encapsulated in a clear resin binder. The system is available with a matt or gloss finish.

✓ FOYER / ENTRANCES, RESTAURANTS, TASTING ROOMS

Standard Colors



FIRE RESISTANCE

SITAC

Class G
Certificate No. 1721/75

SLIP RESISTANCE

BS 7976-2 (typical values
for 4-S rubber slider)

Dry 59, Wet 35

TEMPERATURE RESISTANCE

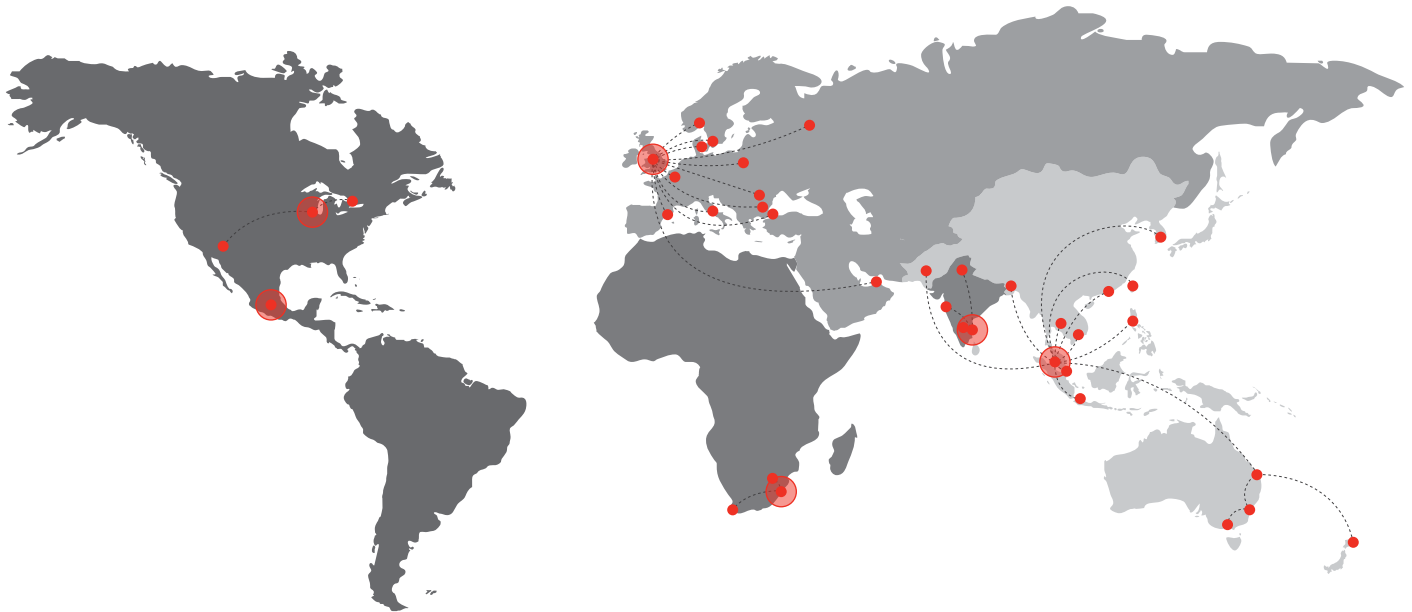
Tolerant of sustained temperatures of 50°C

ABRASION RESISTANCE

BS 8204-2

Class AR2

Applied colours may differ from the examples shown. For a full technical profile, colour chart and samples, contact your local Flowcrete office.



Flowcrete

World leader in seamless resin flooring solutions and other specialist coatings.

Africa

South Africa	+27 31 701 0017	southafrica@flowcrete.com
--------------	-----------------	---------------------------

Asia Pacific (APAC)

Australia	+61 7 3205 7115	australia@flowcrete.com
Bangladesh	+603 6277 9575	bangladesh@flowcrete.com
Hong Kong	+852 2795 0478	hongkong@flowcrete.com
Indonesia	+62 21 252 3201	indonesia@flowcrete.com
Korea	+60 3 6277 9575	korea@flowcrete.com
Malaysia	+60 3 6277 9575	asia@flowcrete.com
New Zealand	+64 7 541 1221	newzealand@flowcrete.com
Pakistan	+60 3 6277 9575	pakistan@flowcrete.com
Philippines	+63 2 834 6506	philippines@flowcrete.com
Singapore	+65 6848 7166	singapore@flowcrete.com
Taiwan	+60 3 6277 9575	taiwan@flowcrete.com
Thailand	+66 2539 3424	thailand@flowcrete.com
Vietnam	+84 28 6287 0846	vietnam@flowcrete.com

Europe & Middle East (EME)

Bulgaria	+359 898 61 58 31	bulgaria@flowcrete.com
Denmark	+46 435 40 01 10	denmark@flowcrete.com
France	+33 1 60 61 74 42	france@flowcrete.com
Italy	+39 339 4853258	italy@flowcrete.com
Norway	+47 6486 0830	norway@flowcrete.com
Poland	+48 22 879 8907	poland@flowcrete.com
Romania	+40 766 596 991	romania@flowcrete.com
Russia	+7 916 931 3513	russia@flowcrete.com
Spain	+34 937 07 0872	spain@flowcrete.com
Sweden	+46 435 40 01 10	sweden@flowcrete.com
Turkey	+90 212 2946570	turkey@flowcrete.com
UAE	+971 4 347 0460	uae@flowcrete.com
UK	+44 (0) 1270 753 000	uk@flowcrete.com

India

India	+91 44 40176600	india@flowcrete.com
-------	-----------------	---------------------

North America

Canada	+1 877-210-2444	canada@flowcrete.com
Mexico	+55 44 40 94 00	mexico@flowcrete.com
USA	+1 513-943-4225	americas@flowcrete.com