



MONDÉCO

- Seamless terrazzo flooring that delivers a stylish surface suited for use in upmarket commercial environments.

Mondéco Seamless Resin Terrazzo Technical Profile



Flowcrete South Africa's seamless terrazzo flooring range, Mondéco, is the ultimate flooring choice for commercial environments owing to its eye-catching and durable finish.

Terrazzo flooring dates back to Ancient Rome where its vibrant, wear-resistant and flexible qualities proved popular with forward-thinking architects building the first modern empire.

Fast-forward to the present day, where Flowcrete's take on this impressive flooring solution remains the first-choice for designers across the globe. Offering a mix of aggregates ranging from sparkling crystal mirror glass right through to tough flint and granite chips, the Mondéco range is the designer's dream for all interior flooring projects.

Application Suitability



Retail



Leisure



Airports



Transport



Offices



Pharmaceutical





Mondéco Crystal (8 mm)

A seamless highly decorative, solvent free, epoxy resin terrazzo floor finish with the inclusion of glass aggregates.

Suitable for airport and railway terminals, shopping centres, hotels, restaurants, and environments where design, aesthetics and durability are of paramount concern.



Attractive:

Available in a range of bright colours with a glamorous, sparkling finish.



Design Potential:

Can be laid in bespoke patterns for a truly unique application.



Seamless Finish:

Delivers a seamless finish (except for underlying slab joints).



Chemical Resistant:

Withstands routine cleaning regimes and accidental solvent spillage.



High Strength:

Stands up to sustained pedestrian traffic and general wear and tear.

Standard Colours



Glacier



Nougat



Roman Silver



Bluebelle



Opal



Candy Apple



Cranberry



Cherry

Technical Profile

FIRE RESISTANCE:

BS476-7: Spread of Flame	Class 2
--------------------------	---------

SLIP RESISTANCE:

TRRL Pendulum Slip Test	Dry >40 Low slip potential
-------------------------	-------------------------------

TEMPERATURE RESISTANCE:

Tolerant of sustained temperatures up to 60°C

COMPRESSIVE STRENGTH:

BS6319	>55 N/mm ²
--------	-----------------------

FLEXURAL STRENGTH:

BS6319	>20 N/mm ²
--------	-----------------------

TENSILE STRENGTH:

BS6319	>10 N/mm ²
--------	-----------------------

BOND STRENGTH:

>1.5 MPa

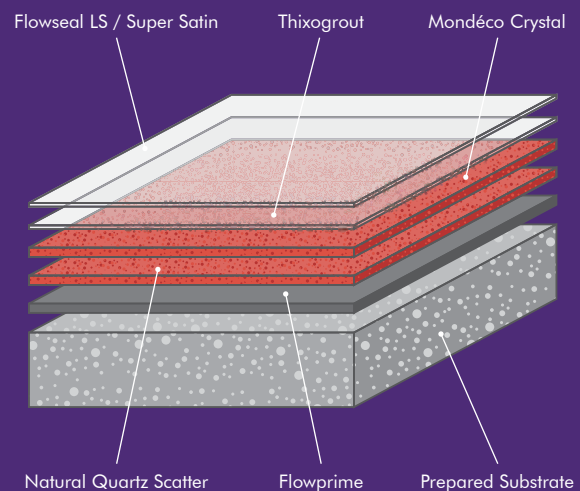
WATER PERMEABILITY:

Karsten Test	Nil (Impermeable)
--------------	-------------------

SPEED OF CURE:

	10°C	20°C	30°C
Light Traffic	24 hrs	20 hrs	16 hrs
Full Traffic	72 hrs	48 hrs	36 hrs
Full Chemical Cure	12 days	7 days	6 days

*Assumes concrete compressive strength is greater than 25N/mm²



** Cure times at temperatures between 0-30°C can be achieved by altering the quantity of catalyst used. For applications falling outside of this temperature range, please contact your local Flowcrete Technical Department.

The applied colours may differ from the examples shown. For a full colour chart and samples, contact your local Flowcrete office.

Mondéco Earth (8 mm)

A seamless, solvent free, epoxy resin terrazzo floor finish incorporating granite and flint aggregates.

Suitable for heavy-duty food and pharmaceutical production and process areas, corridors and kitchens, as well as commercial environments such as airport and railway terminals, shopping centres, hotels and restaurants.



Attractive:

Available in a range of bright colours with a glamorous, sparkling finish.



Design Potential:

Can be laid in bespoke patterns for a truly unique application.



Seamless Finish:

Delivers a seamless finish (except for underlying slab joints).



Chemical Resistant:

Withstands routine cleaning regimes and accidental solvent spillage.



High Strength:

Stands up to sustained pedestrian traffic and general wear and tear.

Standard Colours



Snow



Pebble



Greystone



Moonstone



Sea Green



Spring Green



Coral



Ruby

Technical Profile

FIRE RESISTANCE:

BS476-7: Spread of Flame	Class 2
--------------------------	---------

SLIP RESISTANCE:

TRRL Pendulum Slip Test	Dry >40 Low slip potential
-------------------------	-------------------------------

TEMPERATURE RESISTANCE:

Tolerant of sustained temperatures up to 60°C

IMPACT RESISTANCE:

BS8204-1	Cat A (0.5mm)
----------	---------------

COMPRESSIVE STRENGTH:

BS6319	>55 N/mm ²
--------	-----------------------

FLEXURAL STRENGTH:

BS6319	>20 N/mm ²
--------	-----------------------

TENSILE STRENGTH:

BS6319	>10 N/mm ²
--------	-----------------------

BOND STRENGTH:

>1.5 MPa

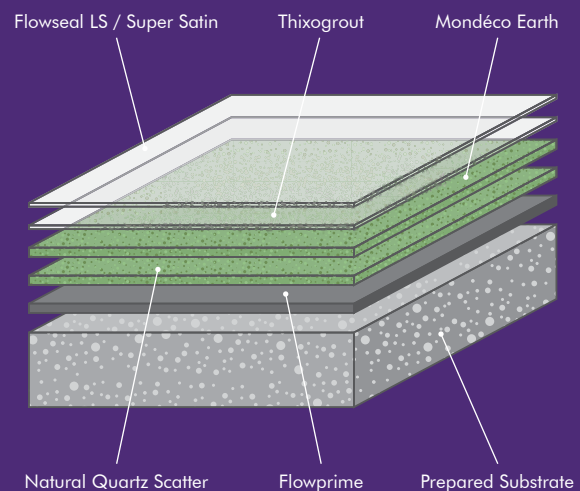
WATER PERMEABILITY:

Karsten Test	Nil (Impermeable)
--------------	-------------------

SPEED OF CURE:

	10°C	20°C	30°C
Light Traffic	24 hrs	20 hrs	16 hrs
Full Traffic	72 hrs	48 hrs	36 hrs
Full Chemical Cure	12 days	7 days	6 days

*Assumes concrete compressive strength is greater than 25N/mm²



** Cure times at temperatures between 0-30°C can be achieved by altering the quantity of catalyst used. For applications falling outside of this temperature range, please contact your local Flowcrete Technical Department.

The applied colours may differ from the examples shown. For a full colour chart and samples, contact your local Flowcrete office.



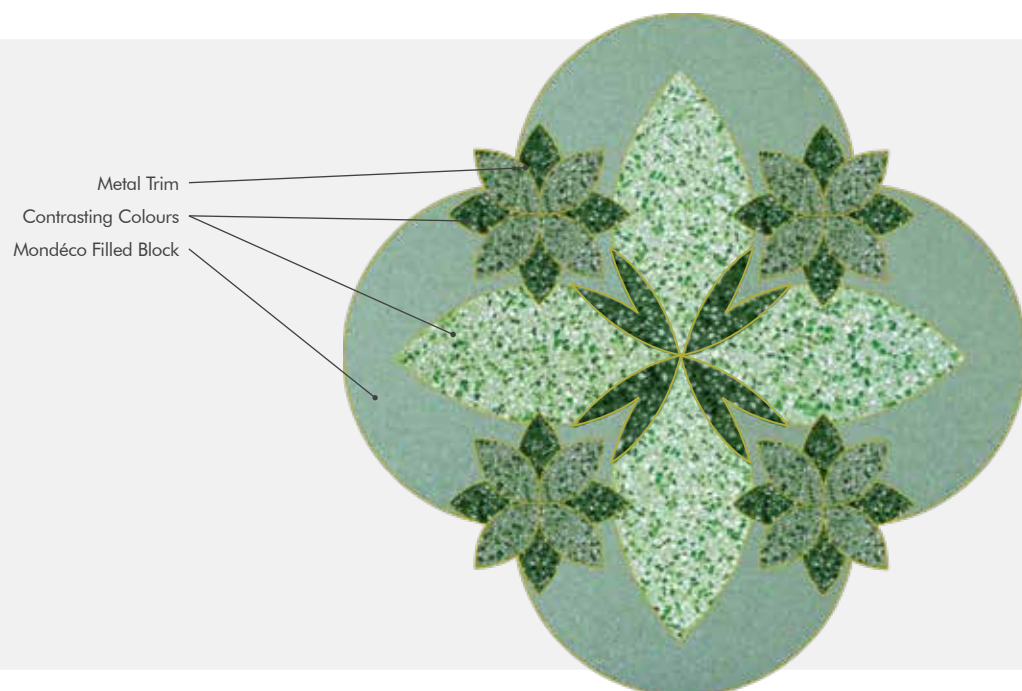


Creative Design Potential

Perhaps the greatest benefit of terrazzo for architects and interior designers is how flexible the material can be in terms of its application.

Mondéco can be installed in a variety of complicated patterns and precision cut forms using brass or aluminium trims, which are laid on the surface of the floor in a matrix that designates each area of the design. Mondéco is simply used to fill each colour block before the whole surface is ground to reveal the stunning design.

Bespoke colour blends are available to create a bold, unique and eye-catching floor finish. Flowcrete South Africa now offers white systems that maintain their vibrancy through the provision of superior UV light resistance, enhancing environments with a bright, welcoming and light-reflective finish.

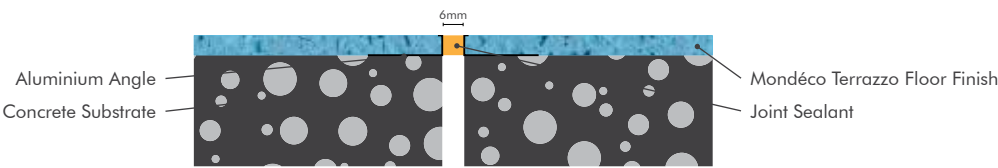


Typical Mondéco Construction Details

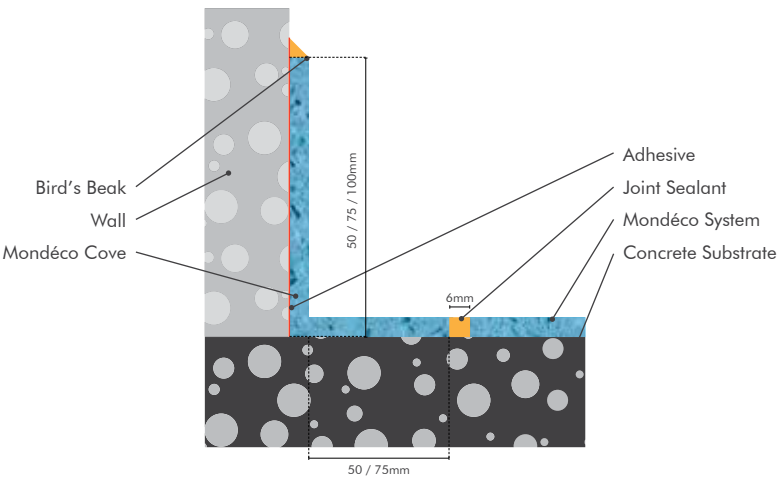
Mondéco can be precast in a variety of moulds and shapes to provide solutions for use on stair treads and risers as well as to deliver a cove base that will provide a seamless transition between the floor and wall.



Typical Expansion Joint Detail

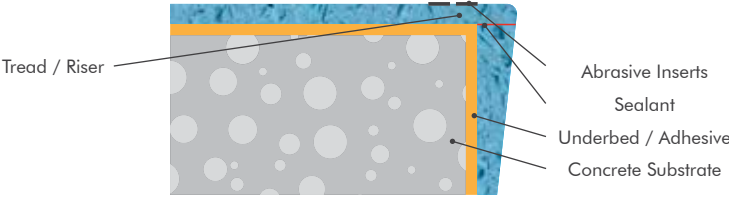


Typical Coving Detail

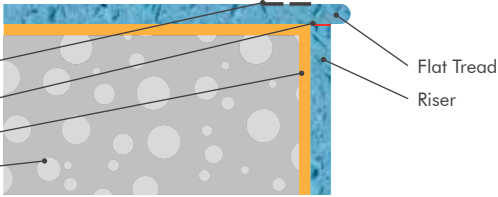


Typical Stair Treads

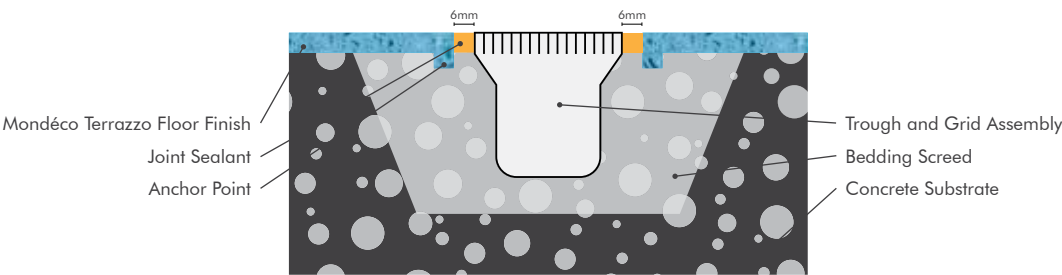
Flat Stair Tread with Riser*



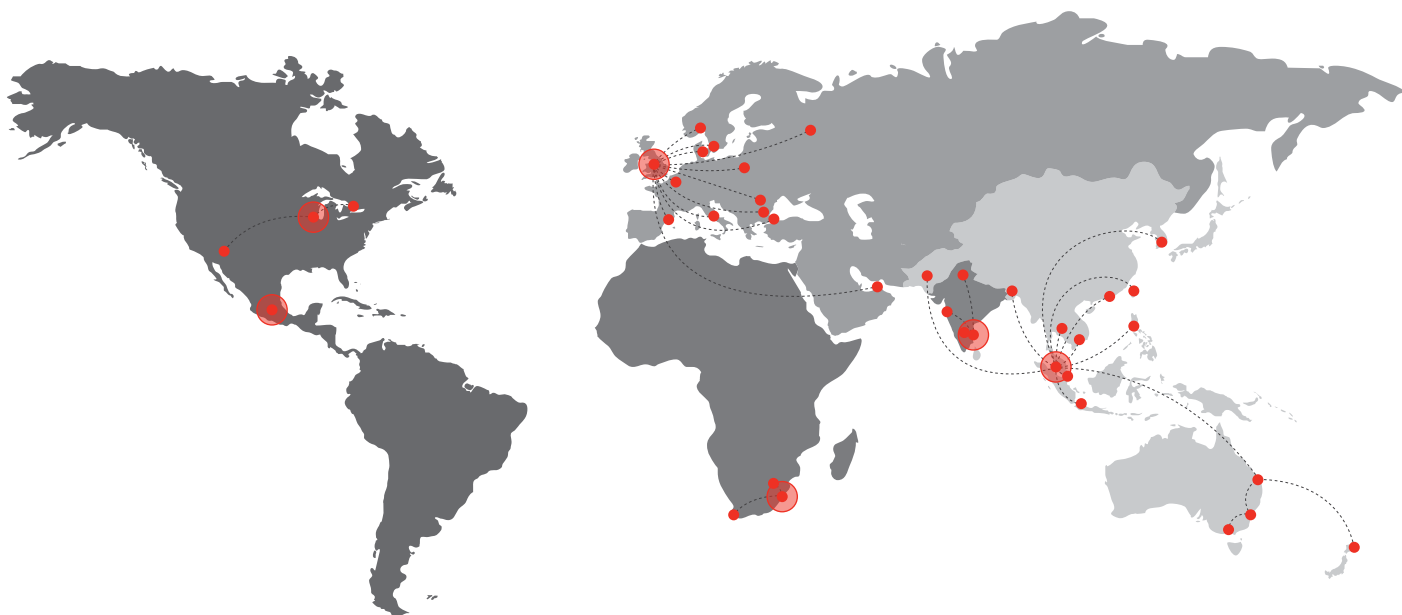
Stair Tread / Riser Combination*



Typical Drainage Channel Arrangement



*Pre-moulded detail (not insitu)



Flowcrete

World leader in seamless resin flooring solutions and other specialist coatings.

Africa

South Africa	+27 31 701 0017	southafrica@flowcrete.com
--------------	-----------------	---------------------------

Asia Pacific (APAC)

Australia	+61 7 3205 7115	australia@flowcrete.com
Bangladesh	+603 6277 9575	bangladesh@flowcrete.com
Hong Kong	+852 2795 0478	hongkong@flowcrete.com
Indonesia	+62 21 252 3201	indonesia@flowcrete.com
Korea	+60 3 6277 9575	korea@flowcrete.com
Malaysia	+60 3 6277 9575	asia@flowcrete.com
New Zealand	+64 7 541 1221	newzealand@flowcrete.com
Pakistan	+60 3 6277 9575	pakistan@flowcrete.com
Philippines	+63 2 834 6506	philippines@flowcrete.com
Singapore	+65 6848 7166	singapore@flowcrete.com
Taiwan	+60 3 6277 9575	taiwan@flowcrete.com
Thailand	+66 2539 3424	thailand@flowcrete.com
Vietnam	+84 28 6287 0846	vietnam@flowcrete.com

Europe & Middle East (EME)

Bulgaria	+359 898 61 58 31	bulgaria@flowcrete.com
Denmark	+46 435 40 01 10	denmark@flowcrete.com
France	+33 1 60 61 74 42	france@flowcrete.com
Italy	+39 339 4853258	italy@flowcrete.com
Norway	+47 6486 0830	norway@flowcrete.com
Poland	+48 22 879 8907	poland@flowcrete.com
Romania	+40 766 596 991	romania@flowcrete.com
Russia	+7 916 931 3513	russia@flowcrete.com
Spain	+34 937 07 0872	spain@flowcrete.com
Sweden	+46 435 40 01 10	sweden@flowcrete.com
Turkey	+90 212 2946570	turkey@flowcrete.com
UAE	+971 4 347 0460	uae@flowcrete.com
UK	+44 (0) 1270 753 000	uk@flowcrete.com

India

India	+91 44 40176600	india@flowcrete.com
-------	-----------------	---------------------

North America

Canada	+1 877-210-2444	canada@flowcrete.com
Mexico	+55 44 40 94 00	mexico@flowcrete.com
USA	+1 513-943-4225	americas@flowcrete.com